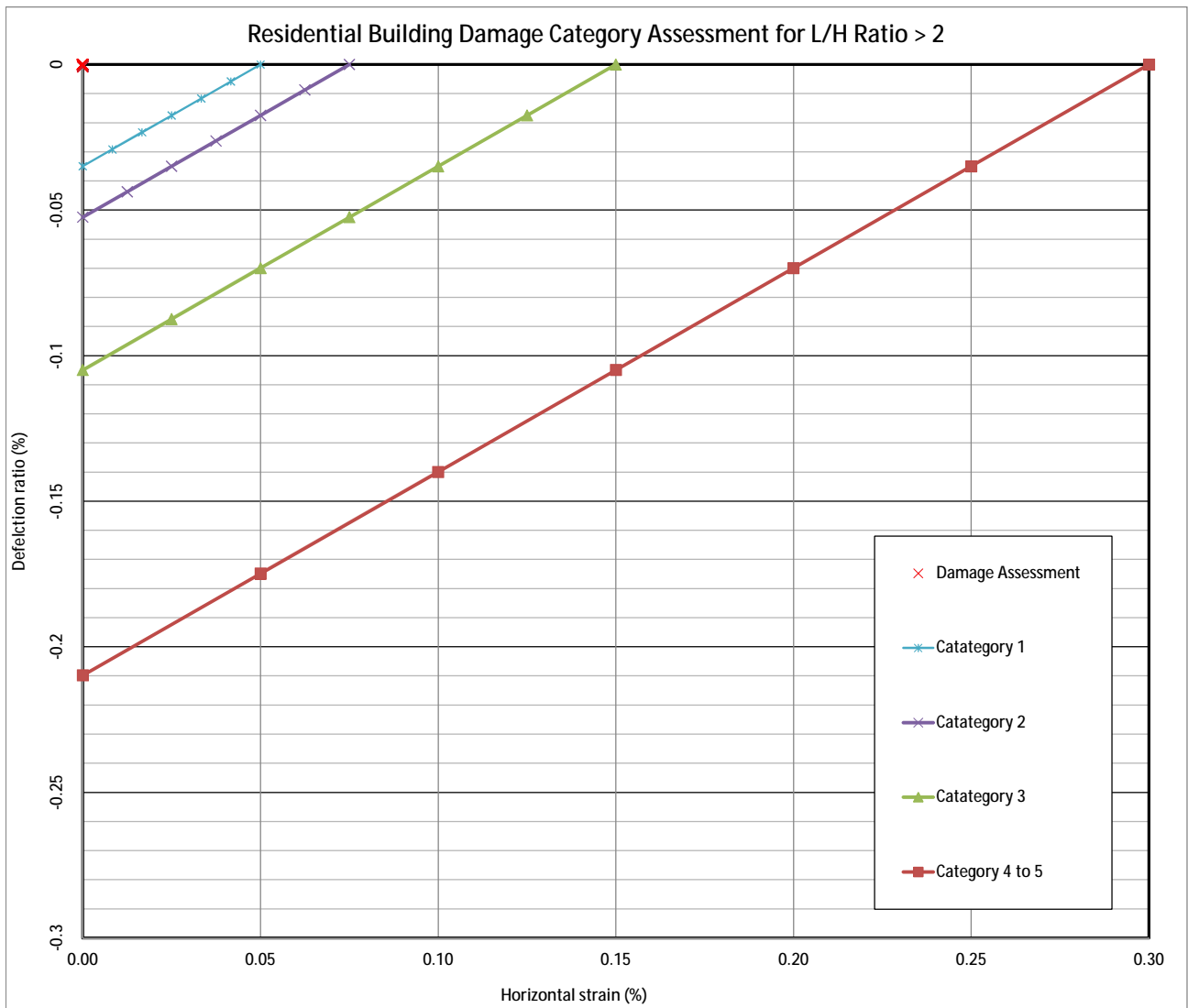


Appendix H

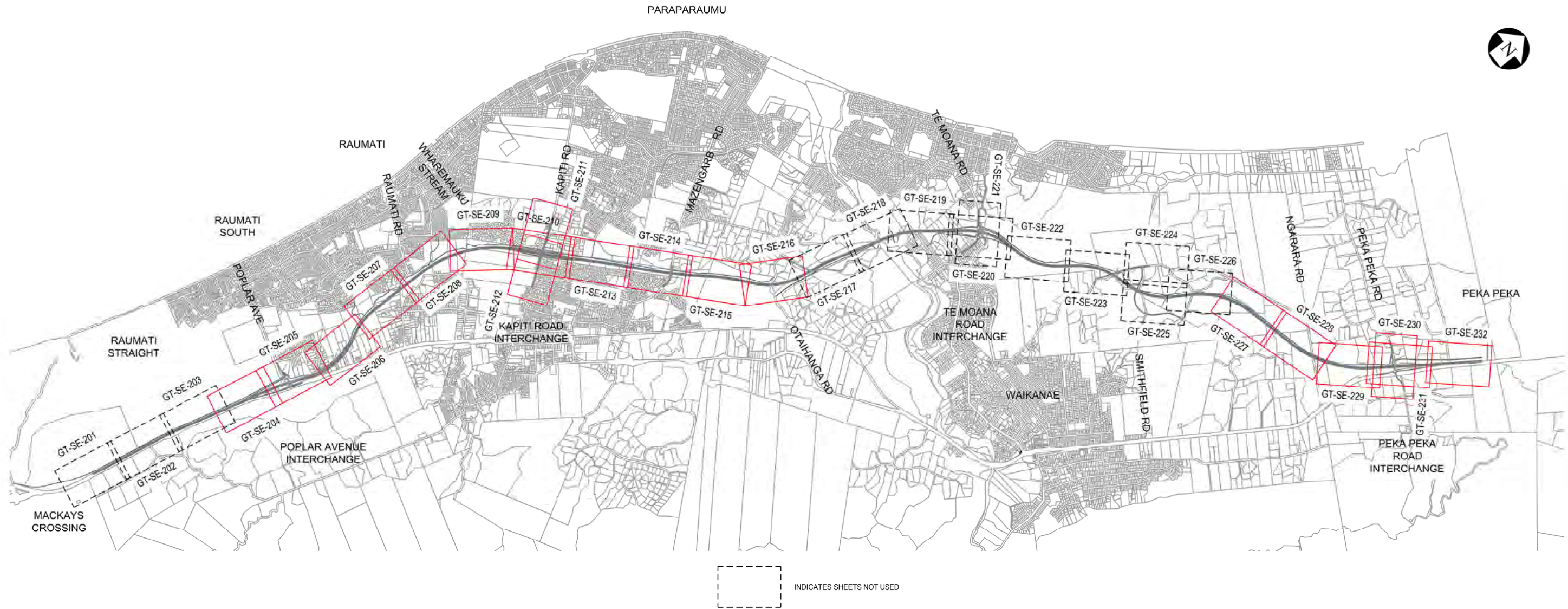
Effects on Buildings



Graph from J.B. Burland, Assessment of damage to buildings due to tunnelling and excavation, 1997.

Appendix I

Effects on Services Settlement Plan



NOTES:

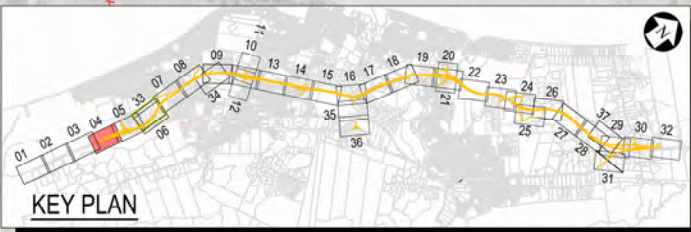
Original Scale (A3)				
1	AEE LODGEMENT	NRN	15.03.12	
Revision:	Amendment	Approved:	Date:	



Project: **MACKAYS TO PEKA PEKA EXPRESSWAY**

EXISTING SERVICES SETTLEMENT CONTOURS SHEET INDEX

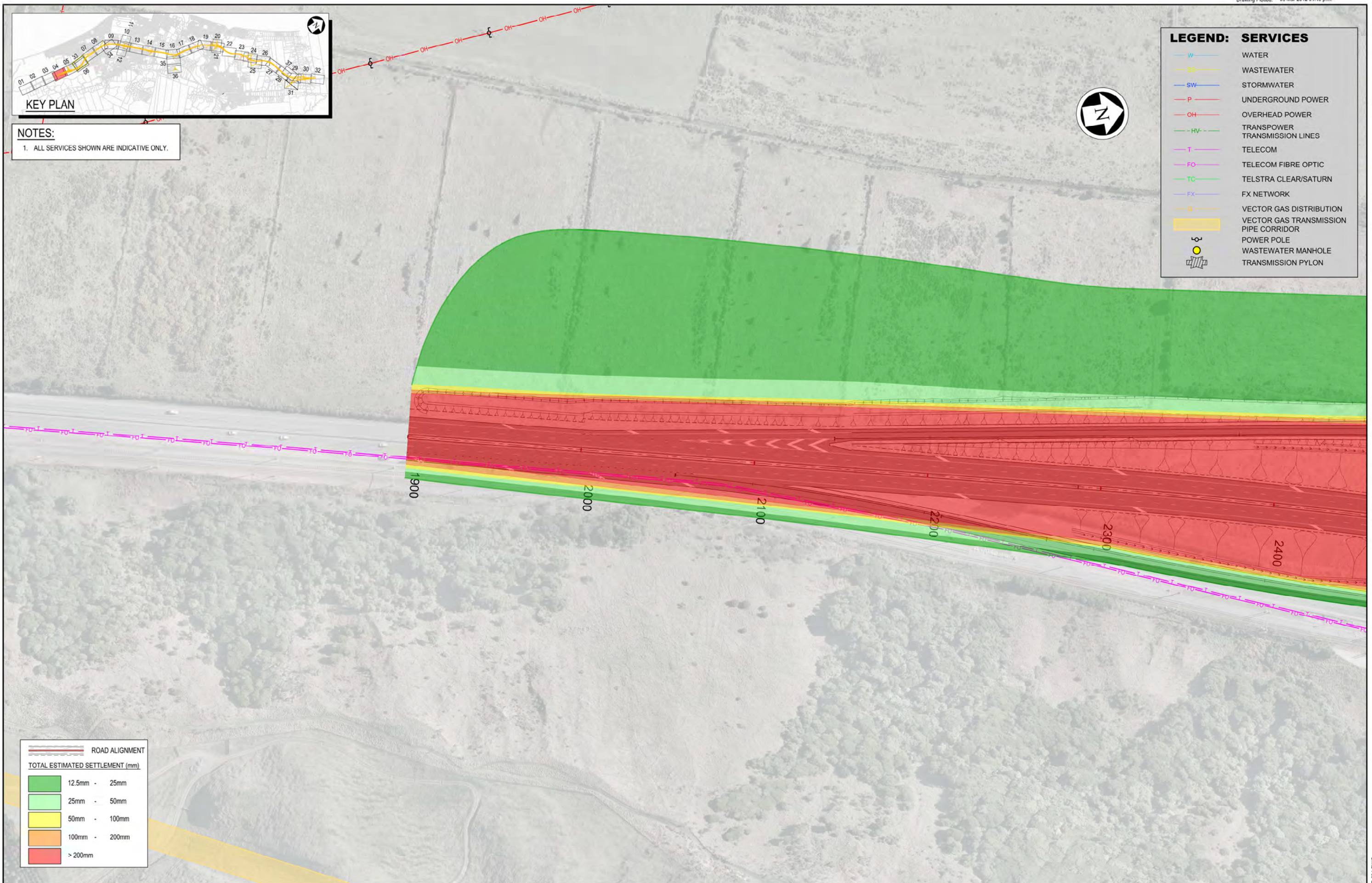
FOR CONSENTING	
Document ID: M2PP-AEE-GWG	Rev: 1
GT-SE-200	



NOTES:
1. ALL SERVICES SHOWN ARE INDICATIVE ONLY.

LEGEND: SERVICES

- W WATER
- SS WASTEWATER
- SW STORMWATER
- P UNDERGROUND POWER
- OH OVERHEAD POWER
- HV TRANSMISSION LINES
- T TELECOM
- FO TELECOM FIBRE OPTIC
- TC TELSTRA CLEAR/SATURN
- FX FX NETWORK
- G VECTOR GAS DISTRIBUTION
- VECTOR GAS TRANSMISSION PIPE CORRIDOR
- POWER POLE
- WASTEWATER MANHOLE
- ▣ TRANSMISSION PYLON



ROAD ALIGNMENT	
TOTAL ESTIMATED SETTLEMENT (mm)	
	12.5mm - 25mm
	25mm - 50mm
	50mm - 100mm
	100mm - 200mm
	> 200mm

NOTES:

Original Scale (A3)				
1	AEE LODGEMENT	NRN	15.03.12	
Revision:	Amendment	Approved:	Date:	



Project: **MACKAYS TO PEKA PEKA EXPRESSWAY**

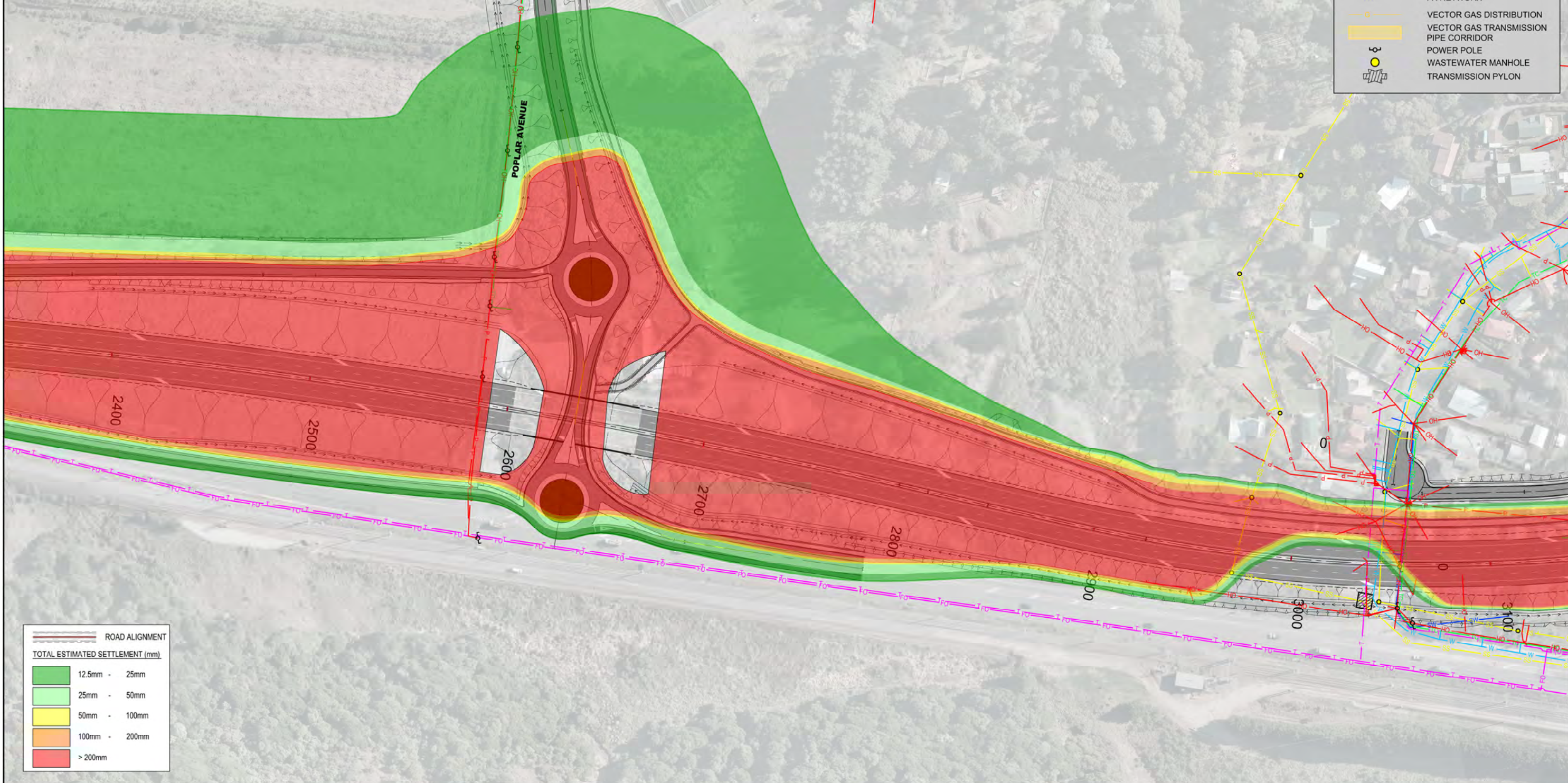
EXISTING SERVICES SETTLEMENT CONTOURS

FOR CONSENTING	
Document ID: M2PP-AEE-GWG	Rev: 1
GT-SE-204	



NOTES:
1. ALL SERVICES SHOWN ARE INDICATIVE ONLY.

LEGEND: SERVICES	
W	WATER
SS	WASTEWATER
SW	STORMWATER
P	UNDERGROUND POWER
OH	OVERHEAD POWER
HV	TRANSPOWER TRANSMISSION LINES
T	TELECOM
FO	TELECOM FIBRE OPTIC
TC	TELSTRA CLEAR/SATURN
FX	FX NETWORK
G	VECTOR GAS DISTRIBUTION
[Yellow Box]	VECTOR GAS TRANSMISSION PIPE CORRIDOR
[Pole Symbol]	POWER POLE
[Manhole Symbol]	WASTEWATER MANHOLE
[Pylon Symbol]	TRANSMISSION PYLON



ROAD ALIGNMENT	
TOTAL ESTIMATED SETTLEMENT (mm)	
[Green Box]	12.5mm - 25mm
[Light Green Box]	25mm - 50mm
[Yellow Box]	50mm - 100mm
[Orange Box]	100mm - 200mm
[Red Box]	> 200mm

NOTES:

Original Scale (A3)	
1 AEE LODGEMENT	NRN 15.03.12
Revision: Amendment	Approved: Date:

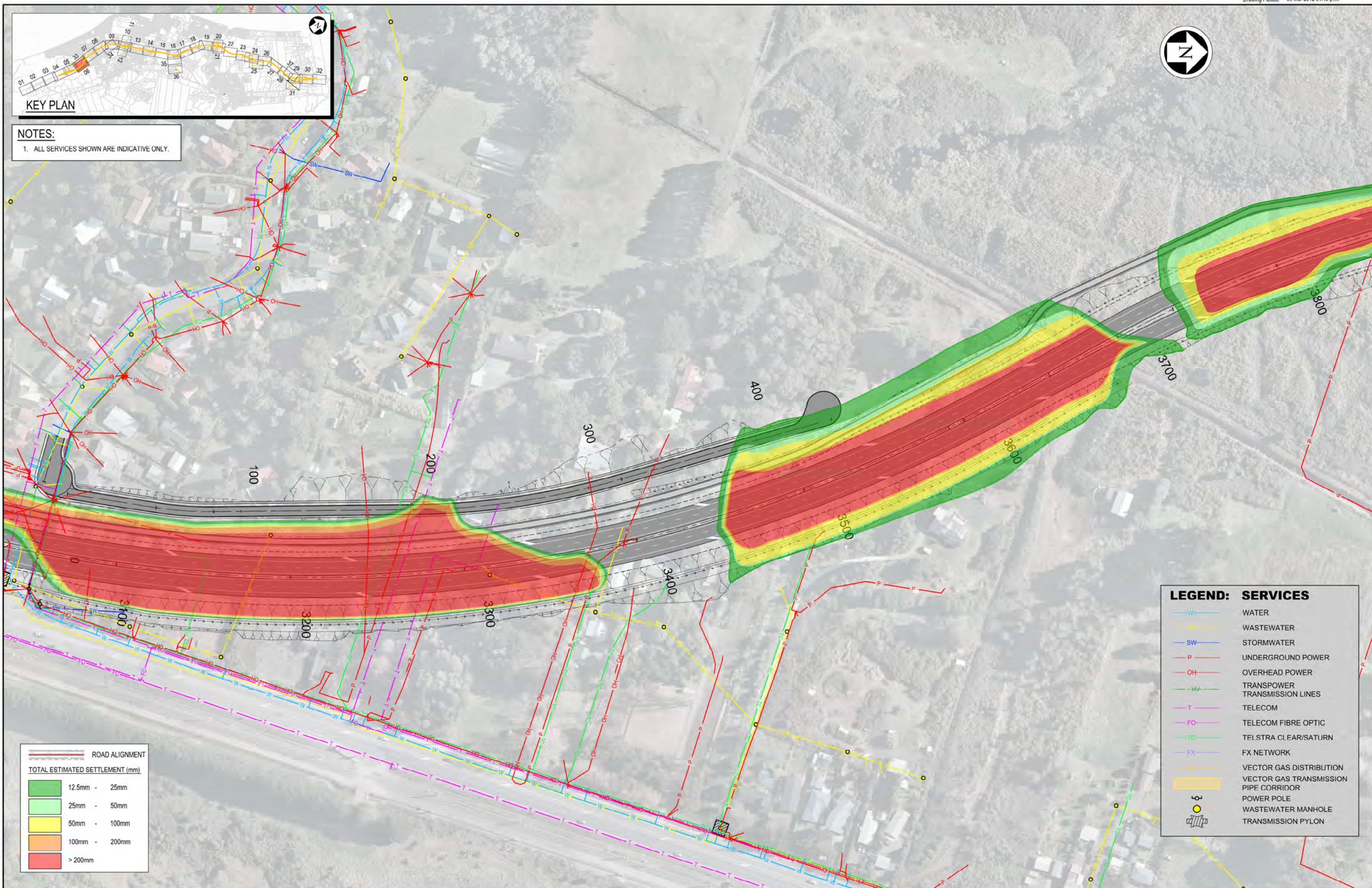
Project: MACKAYS TO PEKA PEKA EXPRESSWAY	
Title: EXISTING SERVICES SETTLEMENT CONTOURS	
Document ID: M2PP-AEE-GWG	Rev: 1
Project No: GT-SE-205	



FOR CONSENTING	
Document ID: M2PP-AEE-GWG	Rev: 1
Project No: GT-SE-205	



NOTES:
1. ALL SERVICES SHOWN ARE INDICATIVE ONLY.



ROAD ALIGNMENT	
TOTAL ESTIMATED SETTLEMENT (mm)	
Green	12.5mm - 25mm
Light Green	25mm - 50mm
Yellow	50mm - 100mm
Orange	100mm - 200mm
Red	> 200mm

LEGEND: SERVICES	
Blue line	WATER
Yellow line	WASTEWATER
Blue line	STORMWATER
Red line	UNDERGROUND POWER
Red line	OVERHEAD POWER
Green line	TRANSPOWER TRANSMISSION LINES
Purple line	TELECOM
Purple line	TELECOM FIBRE OPTIC
Green line	TELSTRA CLEAR/SATURN
Purple line	FX NETWORK
Orange line	VECTOR GAS DISTRIBUTION
Yellow line	VECTOR GAS TRANSMISSION PIPE CORRIDOR
Circle with cross	POWER POLE
Circle with dot	WASTEWATER MANHOLE
Triangle	TRANSMISSION PYLON

NOTES:

Original Scale (A3)	
A AEE LODGEMENT	NRN 56/08/12
Revision: Amendment	Approved: Date:



Project: **MACKAYS TO PEKA PEKA EXPRESSWAY**

Document ID: M2PP-AEE-GWG Rev: 1

FOR CONSENTING

EXISTING SERVICES SETTLEMENT CONTOURS

GT-SE-206